

Silent Noon

Piano

(originally for voice and piano)

Ralph Vaughan Williams

Largo sostenuto

1 E_b A_b/E_b Fm^6/E_b E_b A_b/E_b Fm^6/E_b

3 E_b A_b/E_b Fm^6/E_b E_b E_b/G

5 E_b/A_b A_b D°/A_b E_b A_b/E_b Fm^6/E_b

7 E_b Fm/E_b E_b Gm/A_b A_b Fm^6/A_b

9 Cm $Cm^{(add9)}/B_b$ A_b Gm Gm/B_b E_b A_b/E_b Fm^6/E_b

12 E_b A_b/E_b Fm^6/E_b E_b Fm/E_b E_b

14 Gm/D D^7 Gm Cm^7/G B_b/F E_b

16 B_b/D F B_b

long fresh grass, The fin - ger -

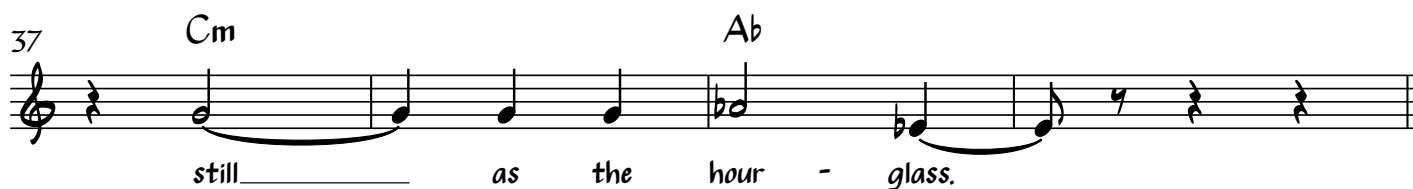
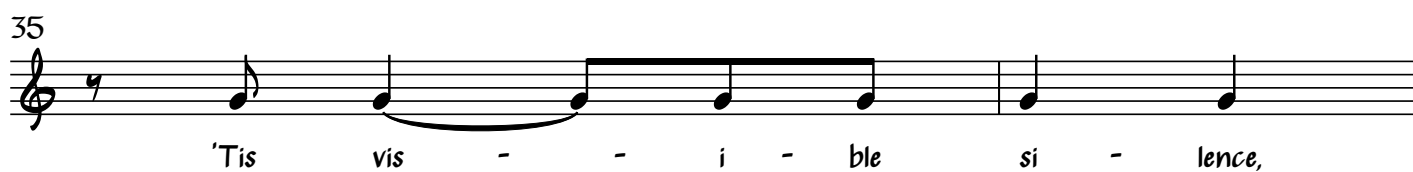
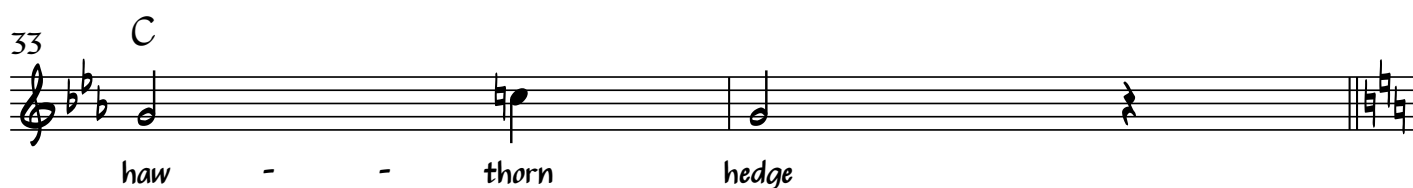
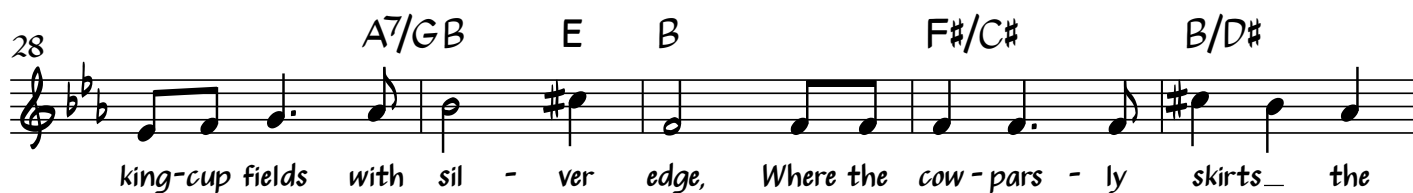
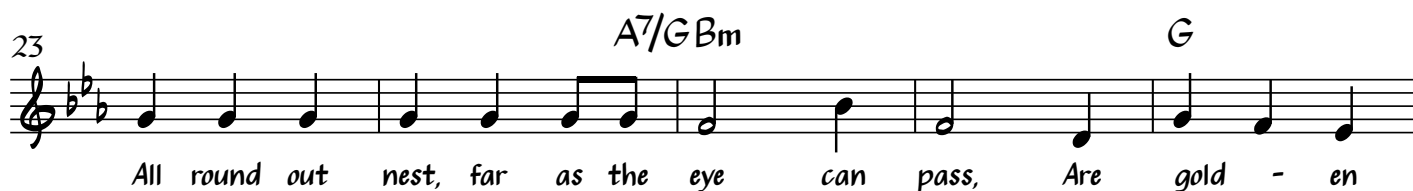
points look through like ros - - y

blooms: Your eyes smile peace.

The pas - ture gleams and glooms 'Neath

bil - low - ing skies that

scat - ter and a - mass.

Poco piu mosso

Quasi Recitative

44 F N.C. F N.C. Fm

Deep in the sun-searched growths the drag-on-fly Hangs like a blue thread

49 N.C. Fm N.C.

loos-end from the sky: So

54 Bb7 Fm7 Bb7 Fm7 Bb Fm7 Bb Fm7

this winged hour is dropt to us from a-bove.

59 Bb Fm7 Bb7

Oh, clasp we to our hearts, for

61 Eb Ab/Eb Fm6/Eb Eb Eb/G

Oh, clasp we to our hearts, for

63 Eb/Ab Ab D°/Ab Eb Ab/Eb F⁶/Ab

death - - less dower, This close com -

65 Eb Gm/Ab Ab Fm⁶/Ab

pan - ioned in - ar - tie - - u - late

67 Cm Cm(add9)/Bb Ab Gm Gm/Bb Cm

hour, When two - fold si - lence was the

70 Ab Eb/Ab Cm/Ab Eb/G Cm Fm/C

song, _____ the _____

72 Eb/Bb Bb⁷ Eb Ab/Eb

song of love.

74 Eb Ab/Eb Eb